



Videojet LifeCycle Advantage™



Continuous Inkjet

## The Videojet 1580 C

The dedicated soft-pigmented contrast printer  
that's as easy to maintain as a standard printer

 **VIDEOJET®**

# The contrast printer that performs and behaves like a dye-based printer

The 1580 C delivers industry-first performance using soft-pigmented contrast inks, providing superior uptime and enabling you to achieve your marking and coding objectives today, and as they evolve. Innovations in hydraulics, printhead, and cartridge designs bring running time and maintenance intervals to the same level as a standard continuous inkjet (CIJ) printer. Based on the tried and trusted Videojet 1580 inkjet printer platform, the 1580 C offers similar features and design.



## **Avoid the normal challenges of contrast inks**

The 1580 C patented cartridge design helps to reduce common faults. It alleviates ink pigments settling in the cartridge and blocking the orifice, which can result in printhead clogging.



## **Improved stability, quality, and maintenance time**

A new design helps ensure the printhead stays clean longer, reducing production downtime and allowing for a longer time between cleanings. The smooth nozzle deck limits ink adhesion, for easier cleaning.

## **◆◆◆ Treat it like a standard CIJ printer**

Unlike most of its competitors, the 1580 C uses similar filters as the rest of our CIJ range, with the same cleaning cycles and preventive maintenance as a dye-based printer. Planned maintenance can take place every 5000 hours, with no need to reduce intervals because of using soft-pigmented inks.





# Maintain consistent code quality and contrast over time

The 1580 C has been specifically designed to deliver codes with consistent quality and contrast that remain readable and don't fade over time.



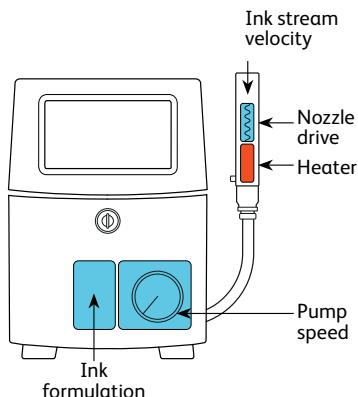
## Optimized inks

With a new formula that reduces the settling rate, our soft-pigmented inks have been designed to deliver more uptime, with stable and consistent contrast over time.



## Easier recirculation

The conical mixer tank is designed to reduce pigment settling. Its shape makes it easier to continuously recirculate the pigment within the ink.



## Dynamic Calibration

Videojet Dynamic Calibration automatically maintains superior print quality, for optimum uptime under changing environmental conditions.









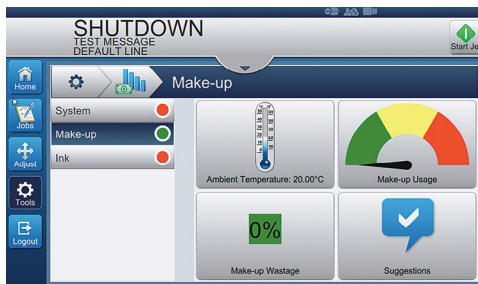
# A contrast printer that's easy to maintain

The 1580 C is one of the simplest CIJ printers to operate and maintain. It is designed to reduce and simplify cleaning intervals, so your operators can stay focused on production.



## Code Assurance out of the box

Our SIMPLICiTY™ user interface guides you every step of the way, with error-proofing rules that define editable fields, permissible data types, date range restrictions and more, greatly reducing printer interactions and potential user errors.



## Monitor key printer elements

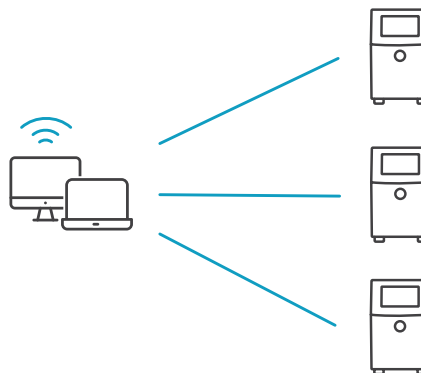
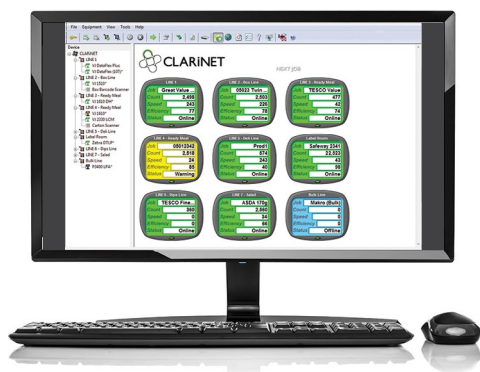
With our Videojet OPTIMiZE tool, the 1580 C can assess a variety of printer parameters, helping you manage ink and make-up usage, calculate future fluids forecast, and determine power wastage.





# Future-proofed for Industry 4.0

Designed to deliver all the connectivity you need, the 1580 C is ready to meet modern printing challenges, and whatever the future needs of Industry 4.0 are likely to demand. Built-in Wi-Fi provides an easy and secure way to wirelessly communicate, while webserver capability and automated troubleshooting make remote operation simple.



## CLARiSUITE®

Videojet's solution for centralized message management and printing control, CLARiSUITE® is a fully integrated solution linking on-product coding to a centralized message database.

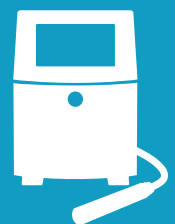
## Remote interface control

Webserver capability allows customers to access printers via supported web browsers on host computers. Up to five web server sessions are allowed for each printer.



## Connectivity Ready

Videojet printers offer a suite of connectivity solutions that can help minimize IT workload, reduce the cost required to connect equipment to your network, and improve the mobility of your printer.





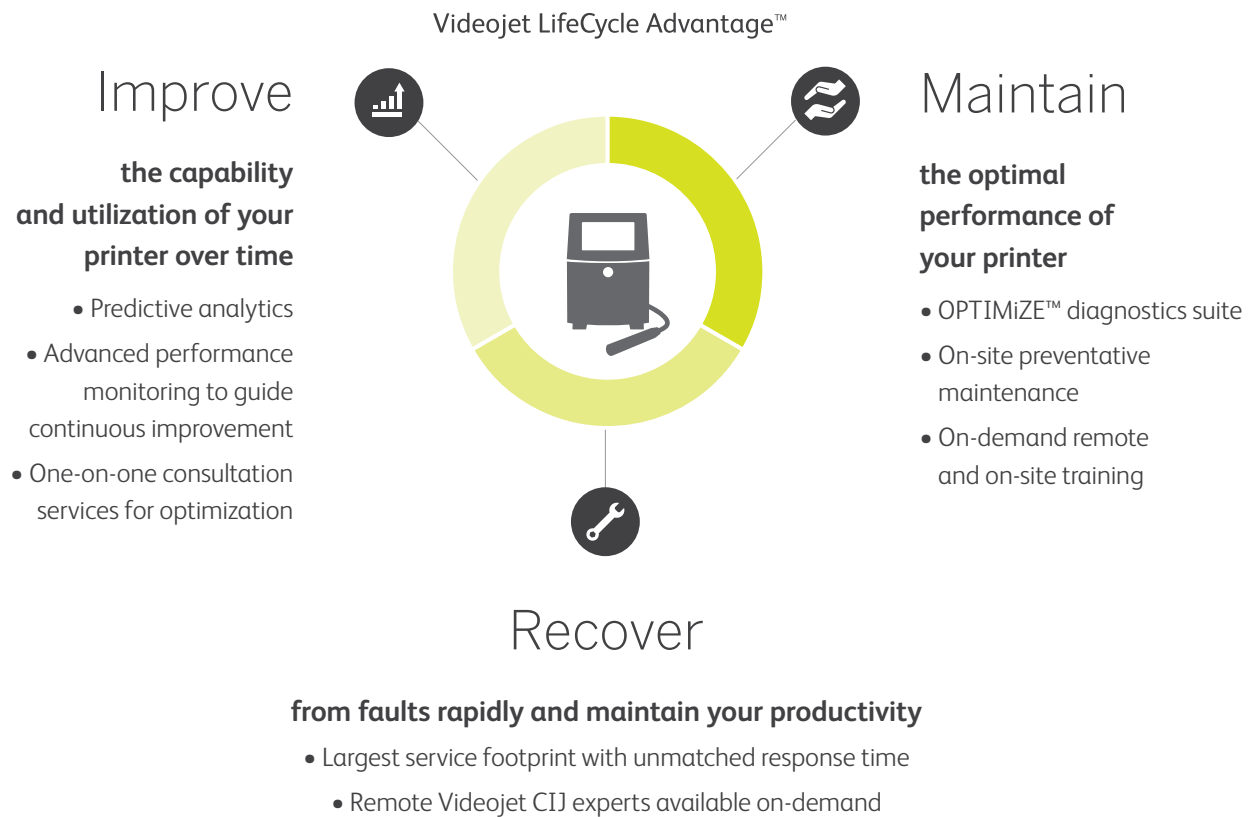
## Connect to your network

The 1580 C's integrated Wi-Fi antenna allows the printer to connect to an internal network with no need for LAN cables or hard wiring, making the printer more mobile.



# Your pathway to productivity

Leverage advanced analytics, remote connectivity, and the largest service footprint in the industry, with Videojet Lifecycle Advantage™.



## Our solutions help you meet your production and sustainability objectives

The Videojet 1580 C's printhead and ink cartridges have been designed to minimize ink clogging and build-up, reducing your cleaning needs. Compared to other contrast printers, less fluid will be wasted while cleaning the 1580 C.

The Videojet 1580 C also utilizes our innovative single-service module, which reduces the frequency of service interventions and the amount of replacement parts required for the printer, while also limiting the waste of hazardous material.

With sustainability as our driving force, we continue to make measurable progress across our three core pillars



### **People** - *Helping People Reach Their Potential*

We strive to attract, develop, engage, and retain the best people to continually make Videojet a better place to work while ensuring a safe working environment for all.



### **Product Innovation** - *Helping Solve Product Identification Challenges*

We place customers at the core of everything we do. We innovate to improve our products' uptime and reliability, enabling our customers to meet production and sustainability goals.



### **Environment** - *Helping Reduce Our Environmental Impact*

We are committed to reducing our emissions, waste, and energy footprint by streamlining our global operations.





Videojet 1580 C print sample guide	
Font/Lines	Print Sample
5x5 Single	ABCDEFGH 12345 5X5
4x7 Single	ABCDEFGH 12345 4X7
5x7 Single	ABCDEFGH 12345 5X7
7x9 Single	ABCDEFGH 12345 7X9
9x12 Single	ABCDEFGH 12345 9X12
10x16 Single	ABCDEFGH 12345 10X16
16x24 Single	ABCDEFGH 12345
25x34 Single	ABCDE 1234
5x5 Twin	ABCDEFGHIJKLMN 1234567890 5X5TL
5x7 Twin	ABCDEFGHIJKLMN 1234567890 5X7TL
4x7 Twin	ABCDEFGHIJKLMN 1234567890 4X7TL
7x9 Twin	ABCDEFGHIJKLMN 1234567890 7X9TL
9x12 Twin	ABCDEFGHIJKLMN 1234567890 9X12TL
10x16 Twin	ABCDEFGHIJKLMNOPQR 1234567890 10X16TL
5x5 Three	ABCDEFGHIJKL 1234567890 5X5 TRI LINE
4x7 Three	ABCDEFGHIJKL 1234567890 4X7 TRI LINE
5x7 Three	ABCDEFGHIJKL 1234567890 5X7 TRI LINE
7x9 Three	ABCDEFGHIJKL 1234567890 7X9 TRI LINE
5x5 Four	ABCDEFGHIJKLMNO 1234567890 4 LINES OF PRINT 5X5 QUAD LINE
4x7 Four	ABCDEFGHIJKLMNO 1234567890 4 LINES OF PRINT 4X7 QUAD LINE
5x7 Four	ABCDEFGHIJKLMNO 1234567890 4 LINES OF PRINT 5X7 QUAD LINE
5x5 Five	ABCDEFGHIJKLMNO 1234567890 5 LINES OF PRINT 5X5 FIVE LINE 70 MICRON NOZZLE

Max. line speed for font/lines as shown	
Feet/min.	Meters/min.
869	265
800	244
667	203
533	163
267	81
254	77
80	24
46	14
314	96
333	102
400	122
190	58
71	22
46	14
105	32
221	67
184	56
101	31
71	22
56	17
46	14
46	14

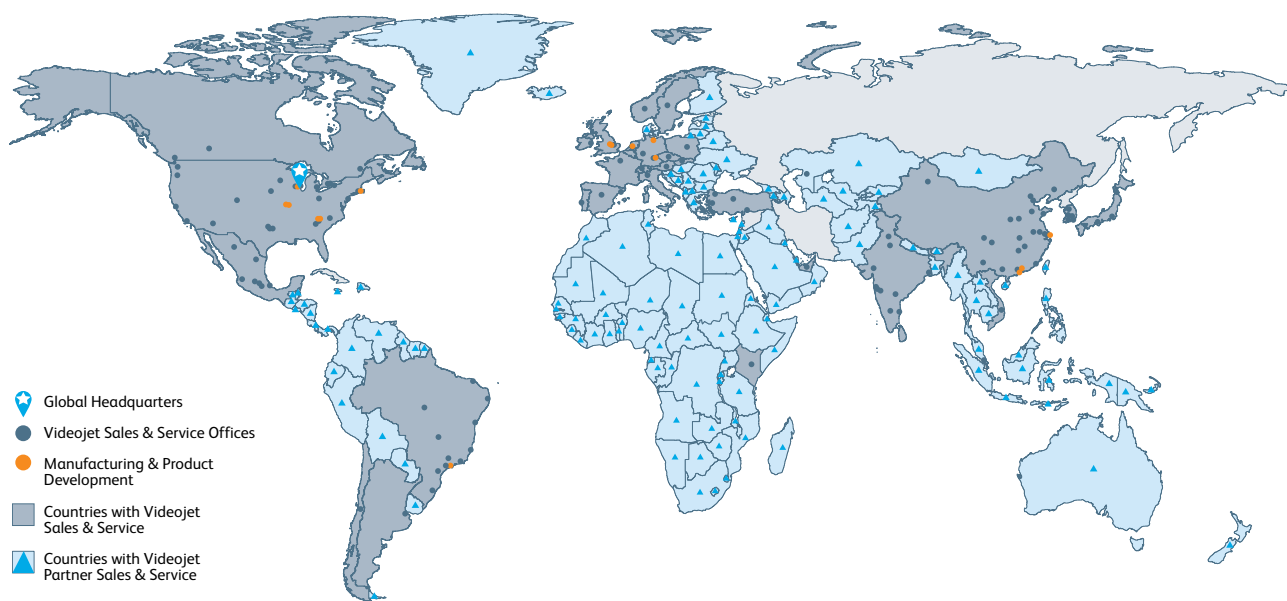
\*The print sample codes shown are for illustrative purposes only. Actual coding is dependent on environment, application, raster, and substrate. Please ask your local Videojet representative to see print samples in your specific application.

# Peace of mind comes as standard

Videojet Technologies is a world-leader in the product identification market, providing in-line printing, coding, and marking products, application specific fluids, and product life cycle services.

Our goal is to partner with our customers in the consumer packaged goods, pharmaceutical, and industrial goods industries to improve their productivity, to protect and grow their brands, and to stay ahead of industry trends and regulations. With our customer application experts and technology leadership in Continuous Inkjet (CIJ), Thermal Inkjet (TIJ), Laser Marking, Thermal Transfer Overprinting (TTO), case coding and labeling, and wide array printing, Videojet has more than 400,000 printers installed worldwide.

Our customers rely on Videojet products to print on over ten billion products daily. Customer sales, application, service and training support is provided by direct operations with over 4,000 team members in 26 countries worldwide. In addition, Videojet's distribution network includes more than 400 distributors and OEMs, serving 135 countries.



Call **(65) 6444 4218**

Email **[marketing.singapore@videojet.com](mailto:marketing.singapore@videojet.com)**

or visit **[www.videojet.sg](http://www.videojet.sg)**

Videojet Technologies (S) Pte Ltd  
No. 11 Lorong 3 Toa Payoh  
Block B #03-20/21 Jackson Square  
Singapore 319579

© 2022 Videojet Technologies Inc. — All rights reserved.

Videojet Technologies Inc.'s policy is one of continued product improvement. We reserve the right to alter design and/or specifications without notice.

Part No. SL000713  
br-1580-c-no-cell-en-sg-1222

